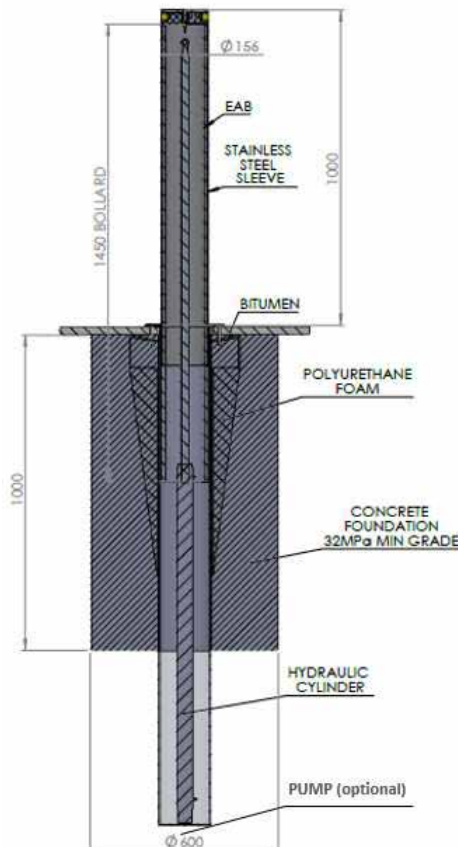
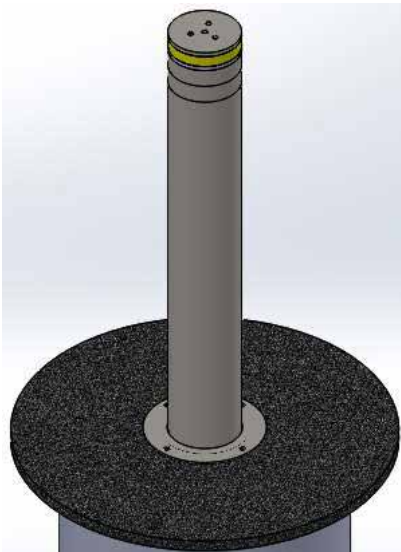




## ENERGY ABSORBING BOLLARD – EABRH AUTOMATIC (HYDRAULIC)

### ▶▶ DATASHEET



Bollard section details

### DESCRIPTION

The EAB-RH is a product of Impact Absorbing Systems Pty Ltd designed and manufactured in South Australia. Its predecessor the EAB is a fixed bollard that could arrest and safely decelerate the motion of an errant motor vehicle weighing 1,600kg and meets the criteria of AS/NZ 3845:1999. Incorporating those properties in the EAB-RH is one thing; however, designing a failsafe automated extension and retraction motion is another. The EAB-RH brings to the table its traditional safety deceleration features along with the convenience of retraction for selected accessibility.

### DESIGN DETAILS

- Design with LED lights on the top and a proximity sensor to stop the bollards motion during detection of any moving/stationary object above the bollard.
- Stainless steel sleeve – protect the bollard from scratch.
- Controller cable and hydraulic hoses
- Hydraulic power pack – 12V DC Single phase
- Control box – custom programmable (PLC)
- Access control option such as key lock switch, mobile phone, desktop, touch screen, RF control, Creston handheld remote, RFID and Traffic light (Omnicom)
- Sump pumps - option for poor drainage or storm water location.
- Installation – Excavate with concrete footing
- Vehicle impact speed and mass – 60kph with 1,600kg

### PRODUCT SPECIFICATION

#### BOLLARD

Dimension	150mm x 1450mm
Weight (kg)	67.5
Speed (km/h)	Used for roads 60kph or less
Colour	Standard Colour (on request)
Finish	Galvanised (F1202002) or Painted (F1202003)

#### CARTRIDGE

Dimension	355.6mm Top and 165mm Bottom x 1550mm
Weight (kg)	28.5

#### PRE-CAST CONCRETE BLOCK (OPTIONAL)

Dimension	600mm x 1000mm min depth (32MPa Grade)
Weight (kg)	500kg

CONTACT US:

**IMPACT ABSORBING SYSTEMS PTY LTD**

9 SHERRIFFS ROAD WEST, LONSDALE SA 5160

TELEPHONE: 08 8545 1433 • EMAIL: [info@impactabsorbing.com.au](mailto:info@impactabsorbing.com.au)